



T. +44 (0) 1449 768606 F. +44 (0) 1449 767827  
enquiries@renvale.com www.renvale.com

MAIN  
DISTRIBUTORS  
for



PRODUCT  
RANGE  
2010

## PRODUCT RANGE

### PITOT



#### DESCRIPTION

COMPLETE ASSEMBLIES  
4mm Tube x 100mm High  
6mm Tube x 130mm High  
6mm Tube x 300mm High

REPLACEMENT TUBES  
6mm x 130mm  
6mm x 300mm

#### RANGE

25, 50, 76 mbars  
25, 50, 70, 76 mbars  
25, 50, 70, 76 mbars

#### PART NUMBER

PI-4-mbar value  
PI-6-mbar value  
PI-6-mbar value-300

### DIFFERENTIAL PRESSURE



#### DESCRIPTION

SINGLE CHANNEL

ALL VALUES

#### RANGE

2.5, 13, 25, 50, 76 & 190mbars

#### PART NUMBER

DPS-mbar value

### FLUID PRESSURE - PRO



#### DESCRIPTION

TITANIUM CASE  
OPERATING TEMP - 150°C  
WEIGHT - 10 to 14g

#### RANGE

5, 10, 20, 40, 100, 250 bar

#### PART NUMBER

TEI-123-bar value-thread  
M5 Male or 10-32 UNF Male  
JIC Cone

### FLUID PRESSURE - STD



#### DESCRIPTION

STAINLESS STEEL CASE  
OPERATING TEMP - 125°C  
WEIGHT - 35g

#### RANGE

5, 10, 20, 40, 100, 250 bar

#### PART NUMBER

TEI-160-bar value-thread  
M5 Male or 10-32 UNF Male  
JIC Cone

### INFRARED - 8 CHANNEL



#### DESCRIPTION

Reads eight channels up to a maximum distance of up to 300mm.

Output is via a fully user-configurable CAN 2.0B system.

#### RANGE

0°C to +200°C

#### PART NUMBER

IRN8-200-F1

### INFRARED TEMP - BLOCK



#### DESCRIPTION

ALLOY HOUSING  
EXCELLENT COMPENSATED  
TEMPERATURE PERFORMANCE

NON-LINEAR

LINEAR

#### RANGE

150°C, 1000°C, 1200°C

200°C

#### PART NUMBER

INFT-temp

INFBL-200

### INFRARED TEMP - THREADED



#### DESCRIPTION

ALLOY HOUSING  
EXCELLENT COMPENSATED  
TEMPERATURE PERFORMANCE

NON-LINEAR

LINEAR

#### RANGE

150°C, 1000°C, 1200°C

200°C

#### PART NUMBER

INFV-temp

INFVL-200

### INFRARED CLUTCH TEMP



#### DESCRIPTION

TWO-PIECE INFRARED SENSOR  
KIT FOR CLUTCH TEMPERATURE

ALLOY HOUSINGS

EXCELLENT COMPENSATED  
TEMPERATURE PERFORMANCE

SEPARATE REMOTE AMPLIFIER

#### RANGE

500°C NON-LINEAR

#### PART NUMBER

INFCT-500 (COMPLETE KIT)

I

# PRODUCT RANGE

### TEMPERATURE



#### DESCRIPTION

SILICON - M6  
 SILICON - 1/8 NPT  
 SILICON - M8 (15mm Long)  
 SILICON - M8 (19mm Long)  
 RESISTIVE - M6  
 RESISTIVE - 1/8 NPT  
 RESISTIVE - M8 (15mm Long)  
 RESISTIVE - M8 (19mm Long)

#### RANGE

-50°C to +150°C  
 Note. No amplifier needed.  
 -50°C to +250°C  
 Note. Resistive sensors are passive and require a separate PT100T amplifier.

#### PART NUMBER

TS-6-temp  
 TS-NPT-temp  
 TS-8-length-temp  
 TR-6-temp  
 TR-NPT-temp  
 TR-8-length-temp  
 Amplifier: PT100T-temp

### THERMOCOUPLE AMP



#### DESCRIPTION

UNIQUE AND POPULAR  
 ELIMINATES THE NEED FOR SPECIAL CABLE AND CONTACTS WHEN USING THERMOCOUPLES  
 ALLOY HOUSING BONDED TO THERMOCOUPLE CONNECTOR

#### RANGE

-50 to +200°C  
 -100 to +400°C  
 0 to +1250°C

#### PART NUMBER

THAK-200  
 THAK-400  
 THAK-1250

### ACCELEROMETER



#### DESCRIPTION

NEW FOR 2007  
 GAS or CAPACITIVE  
 SINGLE or TWIN AXIS  
 NEAT MOUNTING SYSTEM ALLOWS ACCELEROMETERS AND GYRO TO BE BOLTED TOGETHER FIRST, THEN MOUNTED TO THE CHASSIS.

#### RANGE

*SINGLE AXIS*  
 GAS +/-1 to 10G  
 CAPACITIVE +/-1 to 20G  
*TWIN AXIS*  
 GAS +/-1 to 10G  
 CAPACITIVE +/-1 to 20G

#### PART NUMBER

1XACG-axis-value  
 1XACC-axis-value  
 2XACG-value  
 2XACC-value

### GYROSCOPE



#### DESCRIPTION

NEW FOR 2007  
 NEAT MOUNTING SYSTEM ALLOWS GYRO AND ACCELEROMETERS TO BE BOLTED TOGETHER FIRST, THEN MOUNTED TO THE CHASSIS.

#### RANGE

+/-100°/SEC  
 +/-150°/SEC

#### PART NUMBER

GYR-100  
 GYR-150

### GEAR SHIFT - FLEXION



#### DESCRIPTION

STAINLESS STEEL  
 EASY TO INSTALL  
 ADJUSTABLE THRESHOLD  
 COMPACT 24 x 10 x 10mm  
 M8 THREAD  
 WEIGHT: 30g

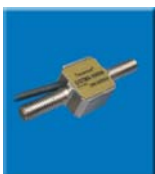
#### RANGE

200 to 600N

#### PART NUMBER

GSFM8-value

### GEAR SHIFT - MOTOR CYCLE



#### DESCRIPTION

TITANIUM  
 DIGITAL+ANALOG OUTPUTS  
 INTEGRATED AMPLIFIER  
 COMPACT 17 x 17 x 12mm  
 M6, M7 or M8 THREADS  
 WEIGHT: 25g nominal

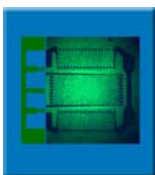
#### RANGE

+/-1000N M6 ends  
 +/-1000N M7 ends  
 +/-1000N M8 ends

#### PART NUMBER

GSMM-6-value  
 GSMM-7-value  
 GSMM-8-value

### STRAIN GAUGE BONDING



#### DESCRIPTION

FULL BRIDGE TRACTION-COMPRESSION, FLEXION OR TORSION STRAIN GAUGES.  
 TEMPERATURE COMPENSATED FROM 0 TO 100°C.  
 OFFSET ADJUSTABLE.  
 BUILT-IN AMPLIFIER OPTIONAL.

#### RANGE

WITHOUT AMPLIFIER  
 WITH AMPLIFIER

#### PART NUMBER

SGNA  
 SGA

### STRAIN GAUGE AMPLIFIERS



#### DESCRIPTION

SUPPLIED AS STAND-ALONE UNITS.  
 PCB or IN-LINE FORMAT (ALLOY HOUSING).  
 GAIN AND OFFSET ADJUSTABLE.  
 DIGITAL VERSION

#### RANGE

IN-LINE (30 x 12 x 10mm)  
 PCB (20 x 10 x 3mm)  
 PCB - ADJUSTABLE  
 PCB - PROGRAMMABLE

#### PART NUMBER

AMPT-gain-offset  
 AMPB-gain-offset  
 AMPBR-gain-offset  
 AMPB-D

## PRODUCT RANGE



## MAIN DISTRIBUTORS FOR



### COMMERCIAL DETAILS

Prices exclude VAT and carriage.  
All prices refer to unterminated sensors, fitted with standard cable.

We offer a terminating service and are happy to provide sensors built with your specific cable requirements.

### QUANTITY DISCOUNTS

1 to 9 = 0%  
10 to 49 = 5%  
50 to 99 = 10%  
100 and over = P.O.A.

Discounts apply to quantities of the same part number and specification on a single order.

### CREDIT ACCOUNTS

Payment terms are 30 days for credit account customers.

### CASH PAYMENTS

For non-account customers, we can accept a pro-forma payment by either cheque, bank transfer or any of the cards listed below.



### DELIVERIES

Please allow four to six weeks for delivery of parts not normally held in stock.

We will always try to shorten these lead times whenever possible.

### CONTACT DETAILS

Renvale Ltd  
Cedars Courtyard  
Brockford  
Suffolk  
IP14 5PQ  
England  
[www.renvale.com](http://www.renvale.com)

### E-MAILS

For more information, please contact Steve or Tony James on: [enquiries@renvale.com](mailto:enquiries@renvale.com)

If e-mailing an order, please use: [enquiries@renvale.com](mailto:enquiries@renvale.com)

### TELEPHONE AND FAX

Telephone:  
+44 (0) 1449 768606

Fax:  
+44 (0) 1449 767827